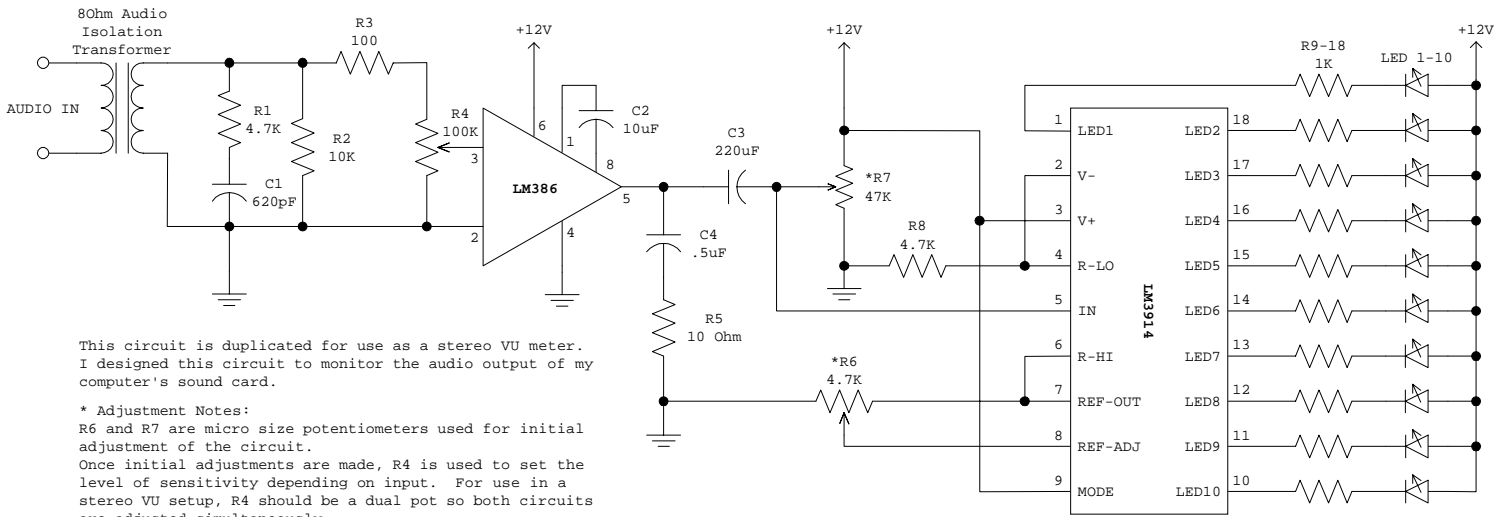


10 LED Audio VU Meter



This circuit is duplicated for use as a stereo VU meter. I designed this circuit to monitor the audio output of my computer's sound card.

*** Adjustment Notes:**

R6 and R7 are micro size potentiometers used for initial adjustment of the circuit. Once initial adjustments are made, R4 is used to set the level of sensitivity depending on input. For use in a stereo VU setup, R4 should be a dual pot so both circuits are adjusted simultaneously.

R6 should be adjusted around +0.7 volts.

R7 should be adjusted to +1.5 volts.

** Care should be taken when adjusting R7. If R7 is set at too low of a value you risk damaging the LM386.